

Join Our Studies

If you or somebody you know has had a stroke or brain injury, we invite you to contact us to learn more about our ongoing research.

Ways to Contact Us:

E-Mail:

DeafStroke@salk.edu

Video Phone:

858.768.0476

Visit Our Website:

www.lcn.salk.edu/asl

To participate, contact us!

Your participation is confidential.

SALK ASL Research Team



Dr. Ursula Bellugi,
Founder, Director &
Co-Principal Investigator

Dr. Greg Hickok,
Co-Principal Investigator



Dr. David Corina,
Co-Principal Investigator

Cindy O'Grady-Farnady,
Research Assistant

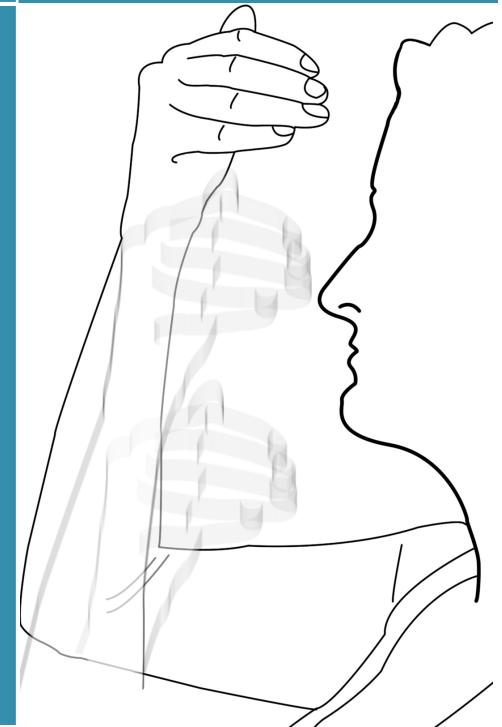


Svenna Pedersen,
Research Assistant

10010 North Torrey Pines Rd
La Jolla, CA 92037-1002
www.lcn.salk.edu/asl

Understanding the Brain Through Sign Language

www.lcn.salk.edu/asl



SALK INSTITUTE

Laboratory of Cognitive Neuroscience

www.lcn.salk.edu/asl
DeafStroke@salk.edu
VP: 858.768.0476

Make a Difference...

If you or somebody you know is a Deaf ASL signer who has had a stroke or other brain injury.

OR

If you are a Deaf, Senior ASL signer, please

Contact Us:

E-Mail:

DeafStroke@salk.edu

VP: 858.768.0476

If selected to participate, you will be compensated; the first meeting can take up to an hour with the possibility for further contact.

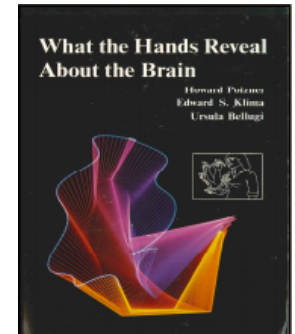
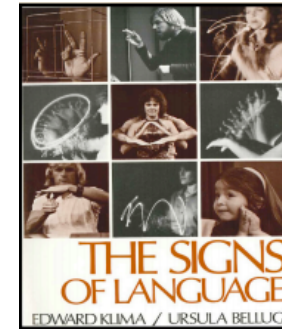
Any information obtained about you during your participation in our studies is confidential.

Our Commitment to the Deaf Community

ASL Research Team:

The [Sign Language and Stroke Research Team](#) is collaboration between the Deaf community, researchers and Staff Scientist Consultants funded by the National Institute of Health (NIH). Our research has uncovered that after a stroke or other head injury Deaf signers may experience language and cognition problems that may have typically been misdiagnosed. Understanding the relationship between the brain and language is vital for the development of effective rehabilitation treatments for Deaf, American Sign Language (ASL) users.

When a hearing person has a stroke and develops language difficulties, speech therapy is a tool to help improve or recover their language. Speech therapy does not help Deaf signers who have had a stroke. No other therapy is available to improve their language. Our hope is to change that, but **we need your help** to understand how brain injuries affect Deaf signers. With your participation, we can achieve this goal together.



Others can use our research to help:

- Develop proper treatments to enhance the quality of life for Deaf people
- Help doctors become aware of the relationship between brain injury and language for signers
- Neurosurgeons plan brain surgery that protects language function in signers
- Develop treatments for regaining ASL and communication skills after a stroke
- Family and friends become more aware of the symptoms and use this knowledge to enhance communication with Deaf people after a stroke or brain injury